

A high-angle, nighttime photograph of a modern high-rise building's rooftop amenities. The building features a grid-like facade with large windows, some of which are illuminated from within. Below the building, a rooftop pool area is visible, featuring a long, rectangular swimming pool with a person swimming. Adjacent to the pool is a lounge area with several modern, low-profile sofas and armchairs, some of which are occupied by people. The lounge area is bordered by a low wall and is surrounded by several young trees planted in individual planters. The overall atmosphere is sophisticated and contemporary.

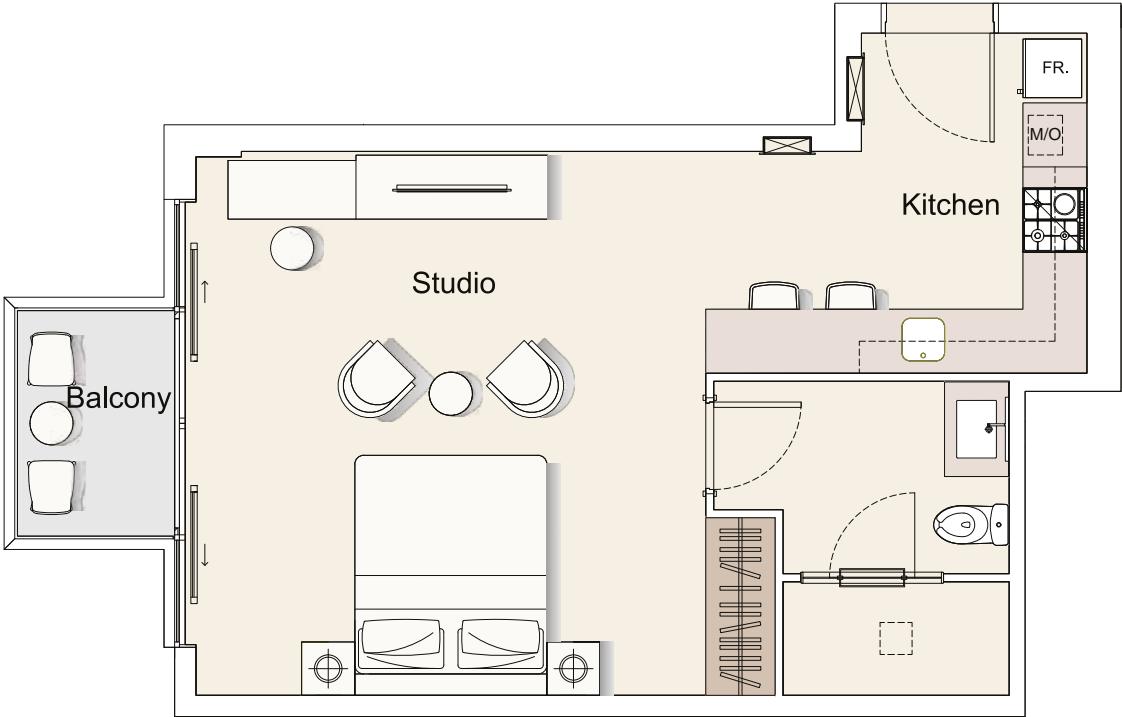
ELLINGTON COLLECTION
AT DOWNTOWN

IT'S
ALL
IN
THE
FINER
DETAILS

 ELLINGTON
PROPERTIES

FLOOR PLANS

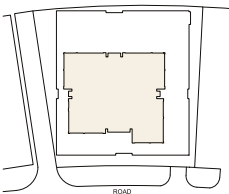
STUDIO - TYPE 01



FLOOR PLAN



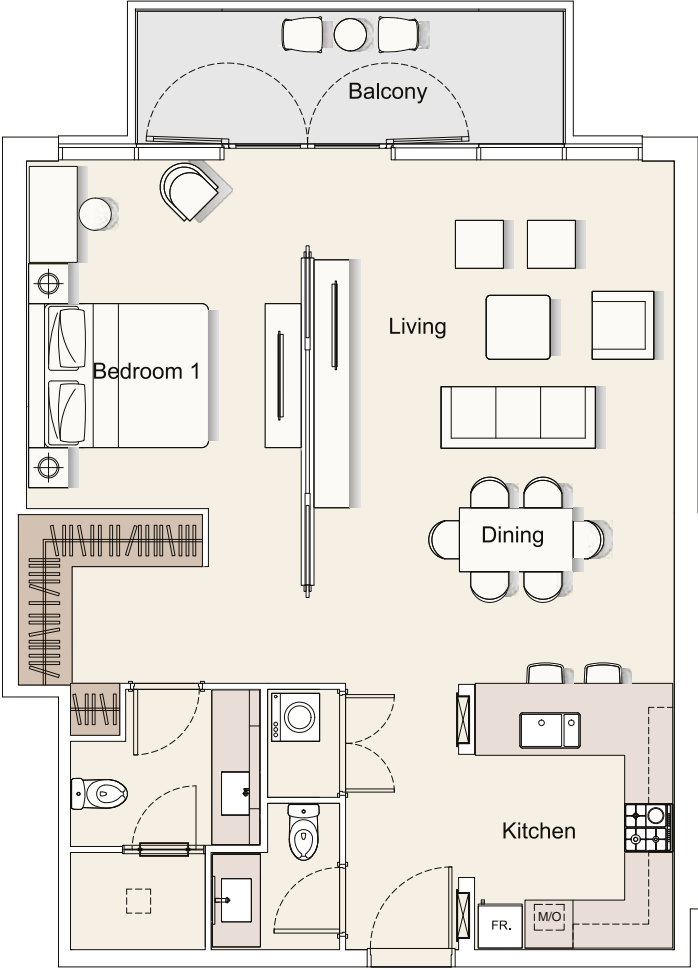
SITE PLAN



Internal Living	501.17 sq.ft.
Outdoor Living	34.77 sq.ft.
Total Living	535.94 sq.ft.

All drawings and dimensions are approximate. Drawings not to scale and are subject to change without notice. The developer reserves the right to make revisions. The units are measured at typical floor in the building and columns may vary in size depending on the floor level. The furnishings and accessories shown are for representation only. The length and width of the Unit and balcony varies depending on which floor and which orientation the unit is located within the building to comply with the building authority regulations.

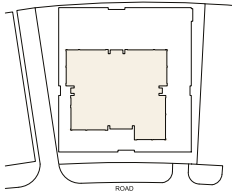
1 BR - TYPE 01



FLOOR PLAN



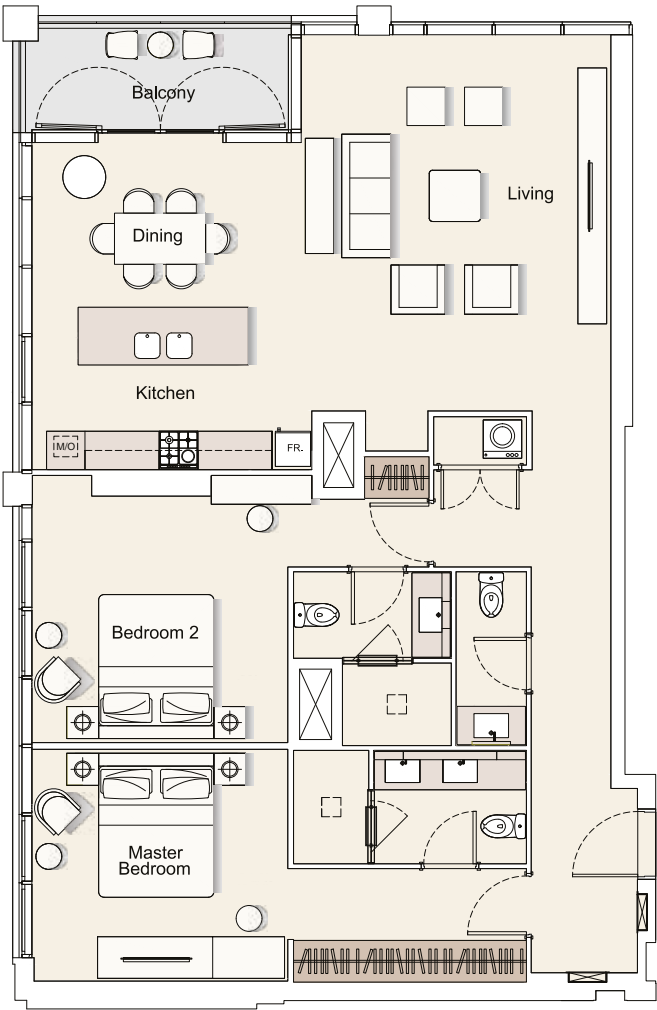
SITE PLAN



Internal Living	1,448.18 sq.ft.
Outdoor Living	76.42 sq.ft.
Total Living	1,524.60 sq.ft.

All drawings and dimensions are approximate. Drawings not to scale and are subject to change without notice. The developer reserves the right to make revisions. The units are measured at typical floor in the building and columns may vary in size depending on the floor level. The furnishings and accessories shown are for representation only. The length and width of the Unit and balcony varies depending on which floor and which orientation the unit is located within the building to comply with the building authority regulations.

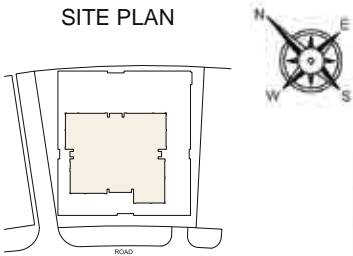
2 BR - TYPE 01



FLOOR PLAN



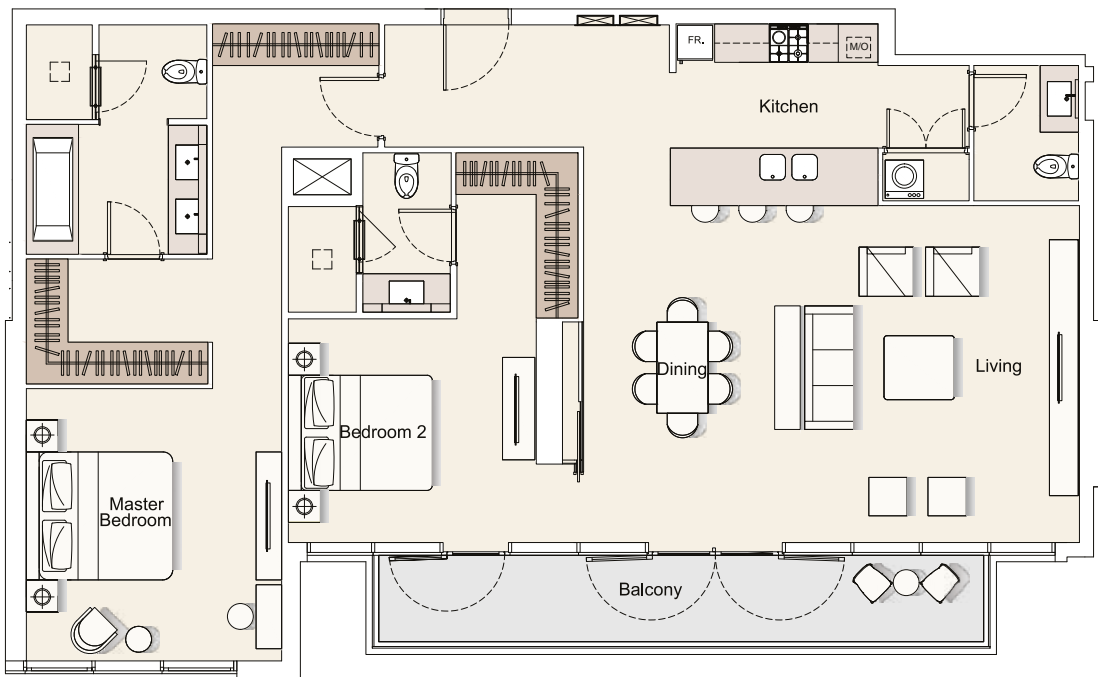
SITE PLAN



Internal Living	1,448.18 sq.ft.
Outdoor Living	76.42 sq.ft.
Total Living	1,524.60 sq.ft.

All drawings and dimensions are approximate. Drawings not to scale and are subject to change without notice. The developer reserves the right to make revisions. The units are measured at typical floor in the building and columns may vary in size depending on the floor level. The furnishings and accessories shown are for representation only. The length and width of the Unit and balcony varies depending on which floor and which orientation the unit is located within the building to comply with the building authority regulations.

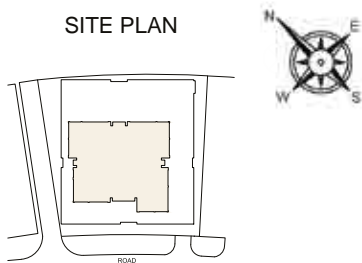
2 BR - TYPE 02



FLOOR PLAN



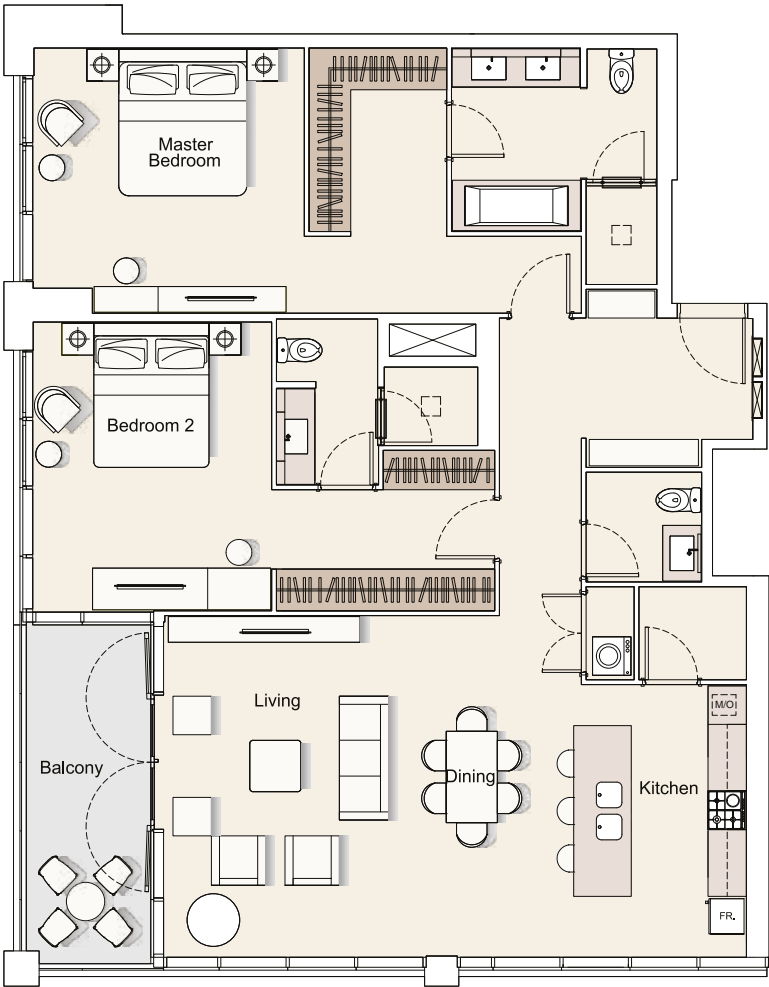
SITE PLAN



Internal Living	1,569.38 sq.ft.
Outdoor Living	151.34 sq.ft.
Total Living	1,720.72 sq.ft.

All drawings and dimensions are approximate. Drawings not to scale and are subject to change without notice. The developer reserves the right to make revisions. The units are measured at typical floor in the building and columns may vary in size depending on the floor level. The furnishings and accessories shown are for representation only. The length and width of the Unit and balcony varies depending on which floor and which orientation the unit is located within the building to comply with the building authority regulations.

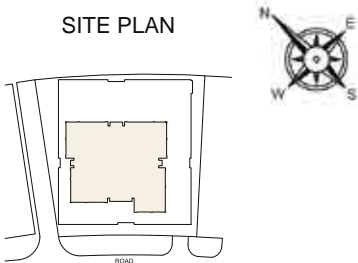
2 BR - TYPE 03



FLOOR PLAN



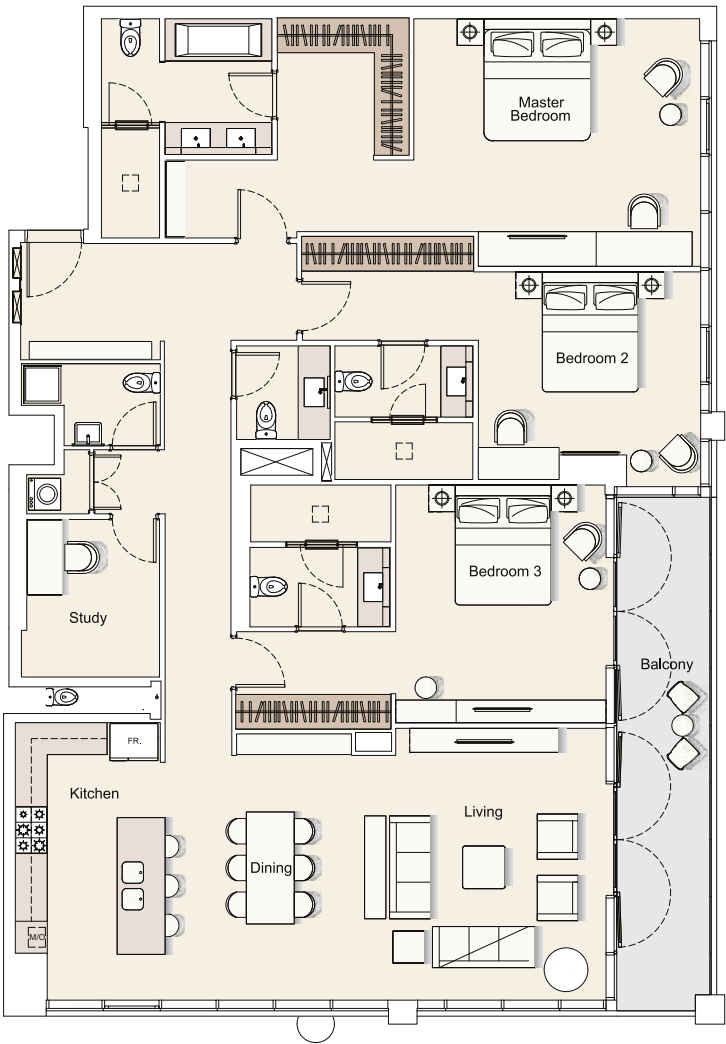
SITE PLAN



Internal Living	1580.25 sq.ft.
Outdoor Living	118.62 sq.ft.
Total Living	1698.87 sq.ft.

All drawings and dimensions are approximate. Drawings not to scale and are subject to change without notice. The developer reserves the right to make revisions. The units are measured at typical floor in the building and columns may vary in size depending on the floor level. The furnishings and accessories shown are for representation only. The length and width of the Unit and balcony varies depending on which floor and which orientation the unit is located within the building to comply with the building authority regulations.

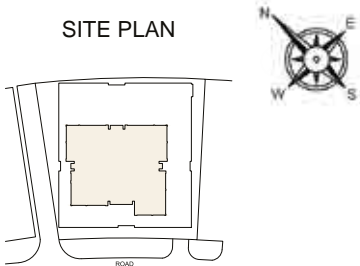
3 BR - TYPE 02



FLOOR PLAN



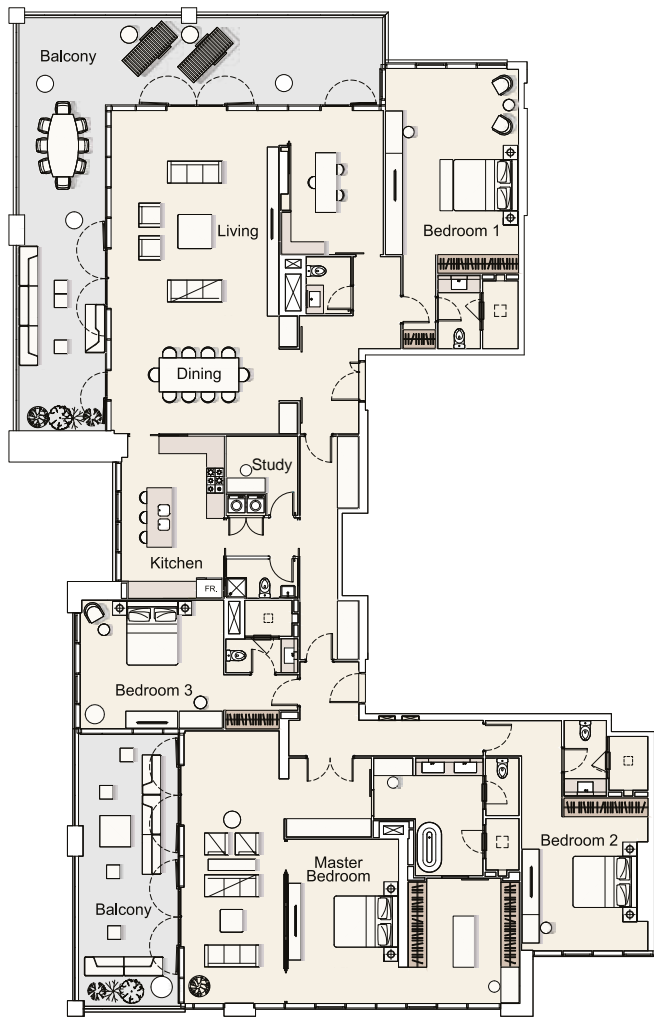
SITE PLAN



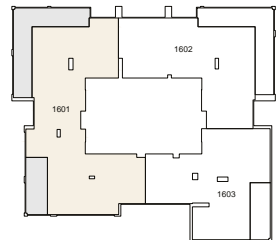
Internal Living	2,345.78 sq.ft.
Outdoor Living	184.60 sq.ft.
Total Living	2,530.38 sq.ft.

All drawings and dimensions are approximate. Drawings not to scale and are subject to change without notice. The developer reserves the right to make revisions. The units are measured at typical floor in the building and columns may vary in size depending on the floor level. The furnishings and accessories shown are for representation only. The length and width of the Unit and balcony varies depending on which floor and which orientation the unit is located within the building to comply with the building authority regulations.

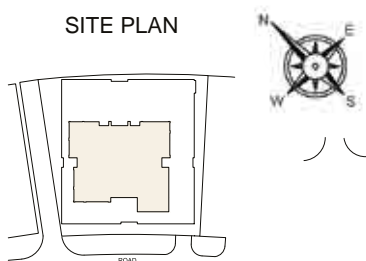
PENTHOUSE - TYPE 01



FLOOR PLAN



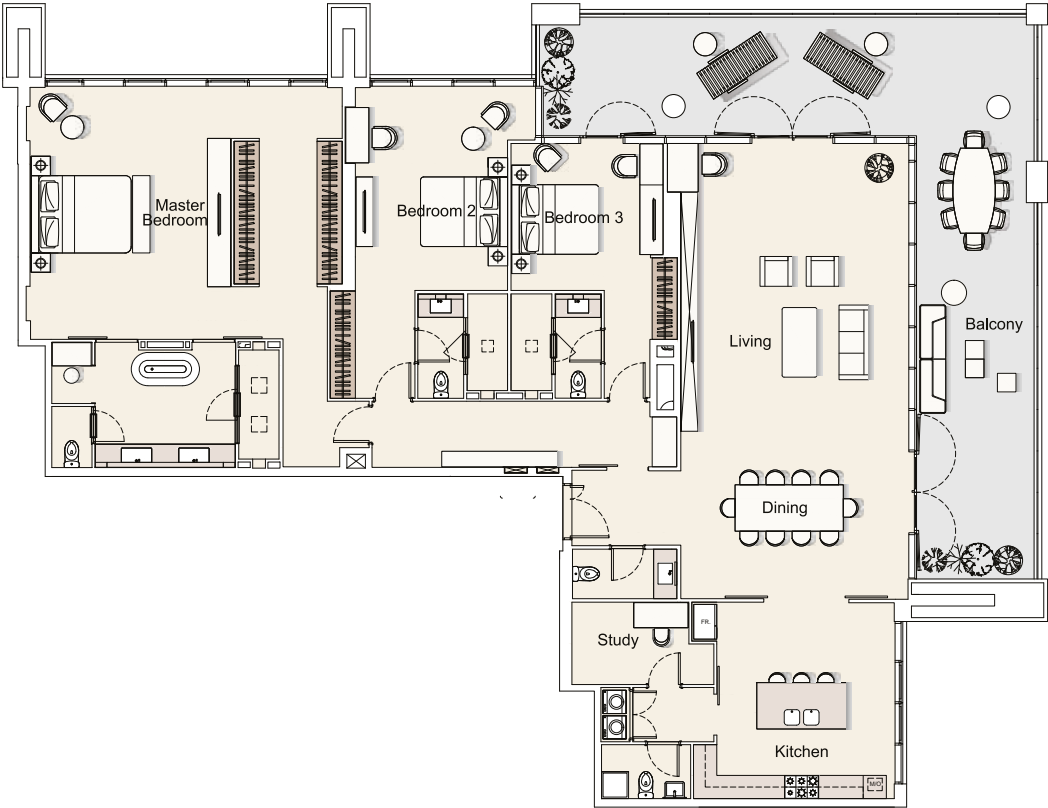
SITE PLAN



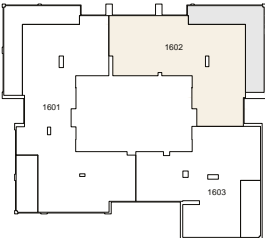
Internal Living	4,416.22 sq.ft.
Outdoor Living	1,226.66 sq.ft.
Total Living	5,642.87 sq.ft.

All drawings and dimensions are approximate. Drawings not to scale and are subject to change without notice. The developer reserves the right to make revisions. The units are measured at typical floor in the building and columns may vary in size depending on the floor level. The furnishings and accessories shown are for representation only. The length and width of the Unit and balcony varies depending on which floor and which orientation the unit is located within the building to comply with the building authority regulations.

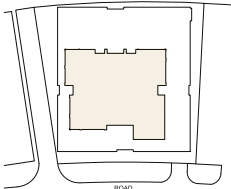
PENTHOUSE - TYPE 02



FLOOR PLAN



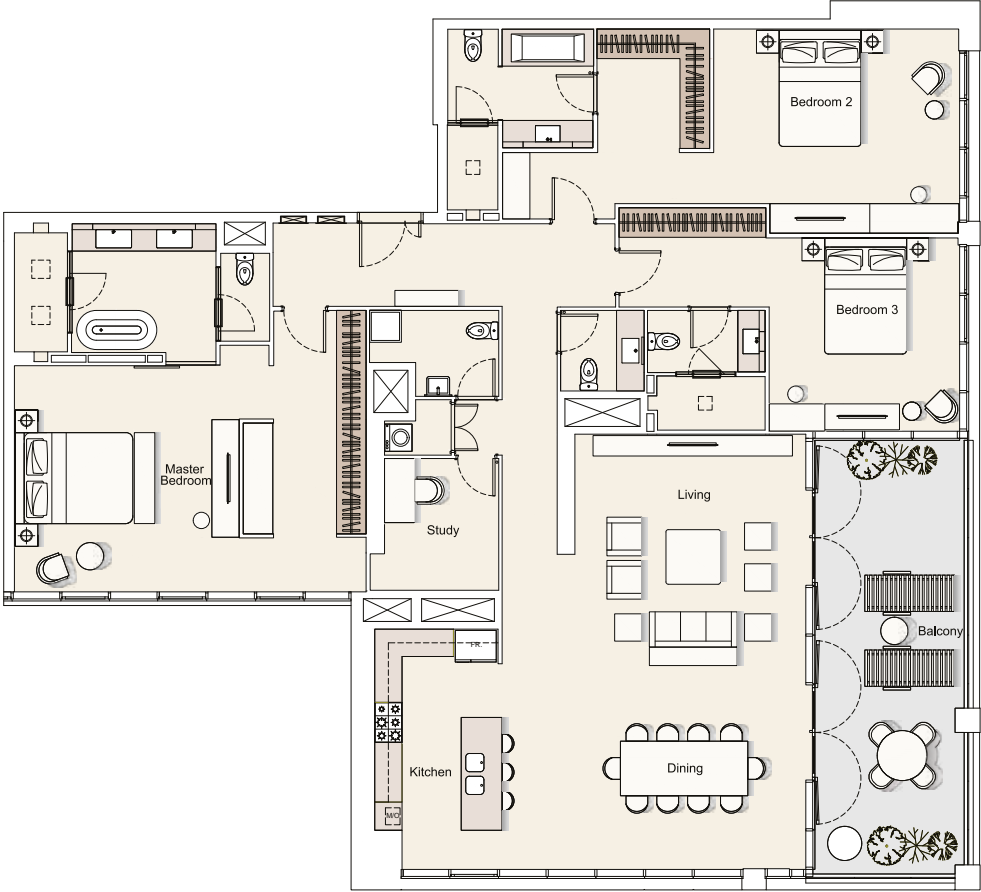
SITE PLAN



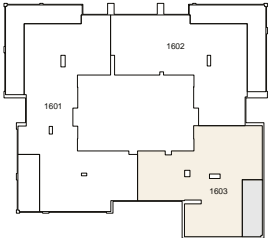
Internal Living	3,121.32 sq.ft.
Outdoor Living	829.25 sq.ft.
Total Living	3,950.57 sq.ft.

All drawings and dimensions are approximate. Drawings not to scale and are subject to change without notice. The developer reserves the right to make revisions. The units are measured at typical floor in the building and columns may vary in size depending on the floor level. The furnishings and accessories shown are for representation only. The length and width of the Unit and balcony varies depending on which floor and which orientation the unit is located within the building to comply with the building authority regulations.

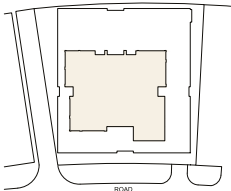
PENTHOUSE - TYPE 03



FLOOR PLAN



SITE PLAN



Internal Living	2,899.47 sq.ft.
Outdoor Living	351.12 sq.ft.
Total Living	3,250.59 sq.ft.

All drawings and dimensions are approximate. Drawings not to scale and are subject to change without notice. The developer reserves the right to make revisions. The units are measured at typical floor in the building and columns may vary in size depending on the floor level. The furnishings and accessories shown are for representation only. The length and width of the Unit and balcony varies depending on which floor and which orientation the unit is located within the building to comply with the building authority regulations.