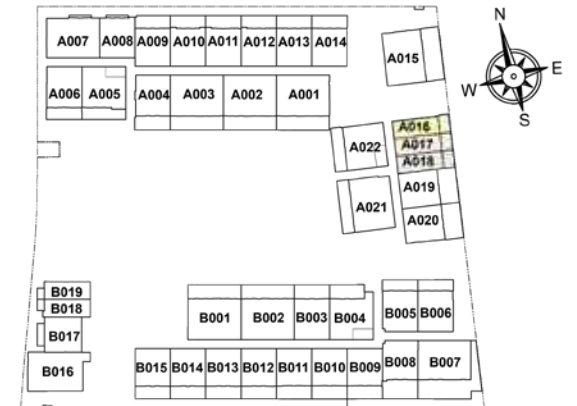


UNIT FLOOR PLANS



*An unparalleled* LIVING EXPERIENCE

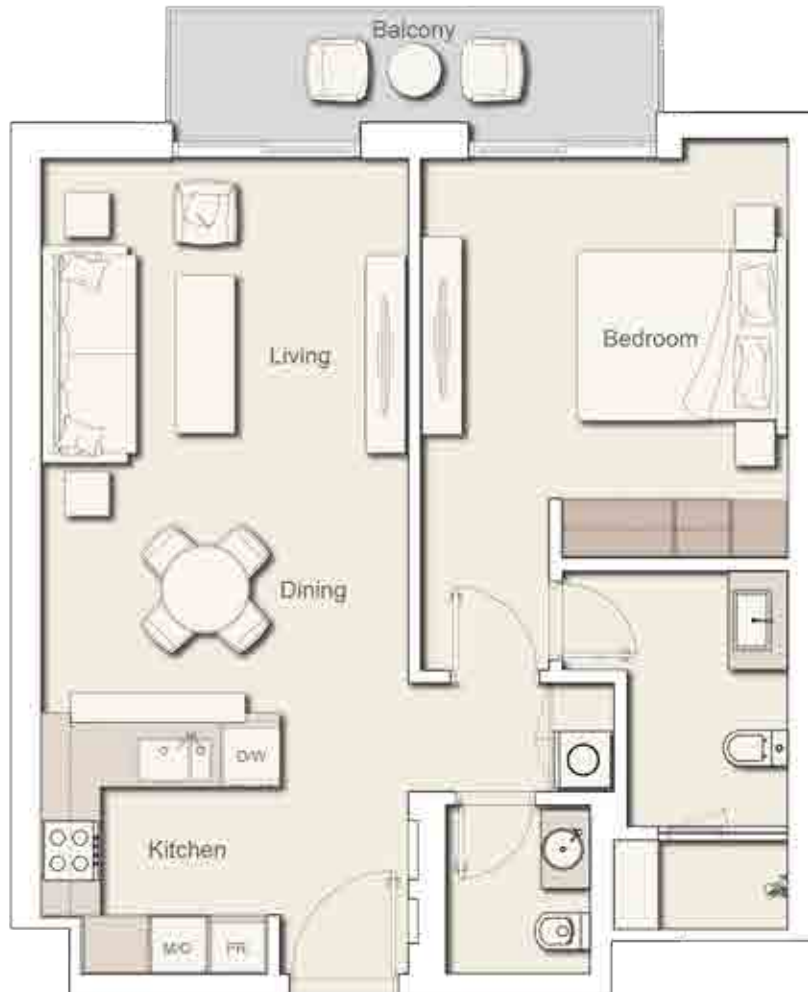
STUDIO  
UNIT TYPE ST-A1



Internal Living Area	432.17 sq. ft.
Outdoor Living Area	107.21 sq. ft.
<b>Total Living Area</b>	<b>539.38 sq. ft.</b>

All drawings and dimensions are approximate. Drawings are not to scale and are subject to change without notice. The developer reserves the right to make revisions. The units are taken from the typical floor of the building and columns may vary in size depending on the floor level. The furnishings and accessories shown are for representation only. The length and width of the unit and balcony varies depending on which floor and which orientation the unit is located within the building to comply with the building authority regulations

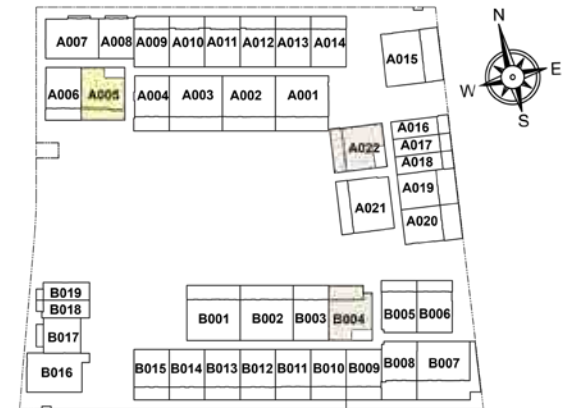
1 BEDROOM  
UNIT TYPE 1B-A



Internal Living Area	712.25 sq. ft.
Outdoor Living Area	74.81 sq. ft.
<b>Total Living Area</b>	<b>787.06 sq. ft.</b>

All drawings and dimensions are approximate. Drawings are not to scale and are subject to change without notice. The developer reserves the right to make revisions. The units are taken from the typical floor of the building and columns may vary in size depending on the floor level. The furnishings and accessories shown are for representation only. The length and width of the unit and balcony varies depending on which floor and which orientation the unit is located within the building to comply with the building authority regulations

1 BEDROOM  
UNIT TYPE 1B-B



Internal Living Area	763.91 sq.ft.
Outdoor Living Area	214.31 sq.ft.
<b>Total Living Area</b>	<b>978.22 sq.ft.</b>

All drawings and dimensions are approximate. Drawings are not to scale and are subject to change without notice. The developer reserves the right to make revisions. The units are taken from the typical floor of the building and columns may vary in size depending on the floor level. The furnishings and accessories shown are for representation only. The length and width of the unit and balcony varies depending on which floor and which orientation the unit is located within the building to comply with the building authority regulations

2 BEDROOM  
UNIT TYPE 2B-A

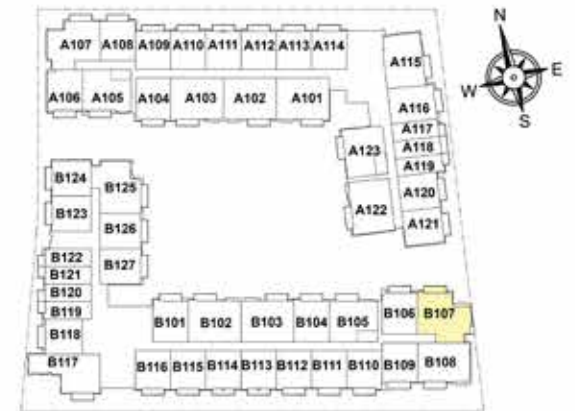


Internal Living Area	1144.53 sq. ft.
Outdoor Living Area	85.79 sq. ft.
<b>Total Living Area</b>	<b>1230.32 sq. ft.</b>

All drawings and dimensions are approximate. Drawings are not to scale and are subject to change without notice. The developer reserves the right to make revisions. The units are taken from the typical floor of the building and columns may vary in size depending on the floor level. The furnishings and accessories shown are for representation only. The length and width of the unit and balcony varies depending on which floor and which orientation the unit is located within the building to comply with the building authority regulations



2 BEDROOM  
UNIT TYPE 2B-C



Internal Living Area	1179.83 sq. ft.
Outdoor Living Area	83.42 sq. ft.
<b>Total Living Area</b>	<b>1263.25 sq. ft.</b>

All drawings and dimensions are approximate. Drawings are not to scale and are subject to change without notice. The developer reserves the right to make revisions. The units are taken from the typical floor of the building and columns may vary in size depending on the floor level. The furnishings and accessories shown are for representation only. The length and width of the unit and balcony varies depending on which floor and which orientation the unit is located within the building to comply with the building authority regulations