



MAKE A LIVING STATEMENT



KEY FEATURES

Downtown Dubai and Business Bay are two of the most sought-after neighbourhoods in Dubai and with good reason. Located adjacent to one another, both neighbourhoods emanate a cosmopolitan vibe and offer world-class retail, dining and entertainment experiences.

Downtown Dubai, renowned for the iconic Burj Khalifa and The Dubai Mall; the world's largest luxury mall, is also home to beautifully landscaped walkways, lush green parks and some of the trendiest hotels in the city.

Just south of Downtown Dubai, Business Bay's claim to fame is JW Marriott Marquis, the world's tallest hotel. Featuring modern skyscrapers and Bay Avenue's family-friendly recreational facilities including a skate park and jogging track, and soon the Dubai Canal, the neighbourhood is a natural choice for many residents in the city. Centrally located, both Downtown Dubai and Business Bay offer seamless connectivity to the city via the Dubai Metro red line and the Sheikh Zayed Road and Al Khail Road expressways.

SEAMLESSLY CONNECTED

2
minutes

OPERA
DISTRICT

2
minutes

BURJ KHALIFA
DUBAI MALL

8
minutes

DUBAI INTERNATIONAL
FINANCIAL CENTRE.

12
minutes

MEYDAN
RACECOURSE

16
minutes

DUBAI INTERNATIONAL
AIRPORT.

17
minutes

DUBAI
CREEK

NUMBER OF UNITS PER TYPE

Studios - 26 units

1 bedroom - 36 units

2 bedrooms - 52 units

3 bedrooms - 14 units

Penthouse- 3 units

SIZE RANGE PER UNIT TYPE

Studio

534 sq.ft.

1 bedroom

ranges from 994 sq.ft to 1037 sq.ft.

2 bedrooms

ranges from 1524 sq.ft to 1720 sq.ft.

3 bedrooms

2530 sq.ft.

Penthouse

ranges from 3956 sq.ft to 5642 sq.ft.



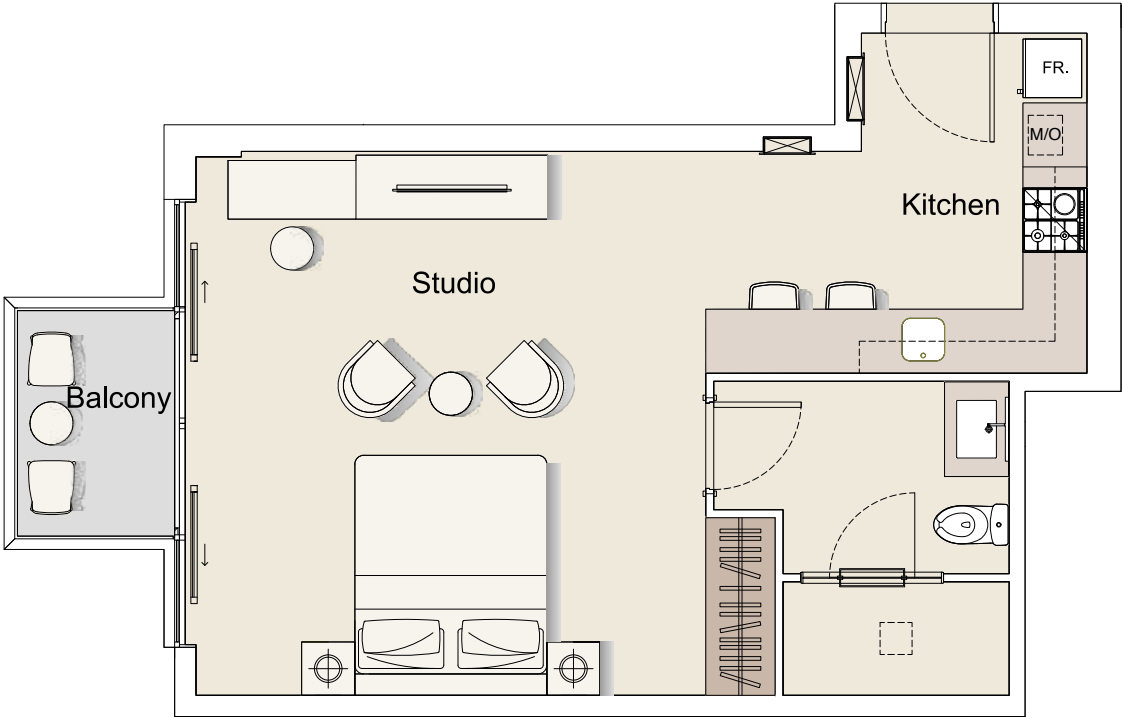








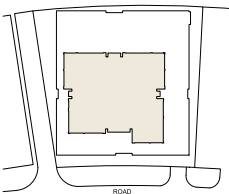
STUDIO - TYPE 01



FLOOR PLAN



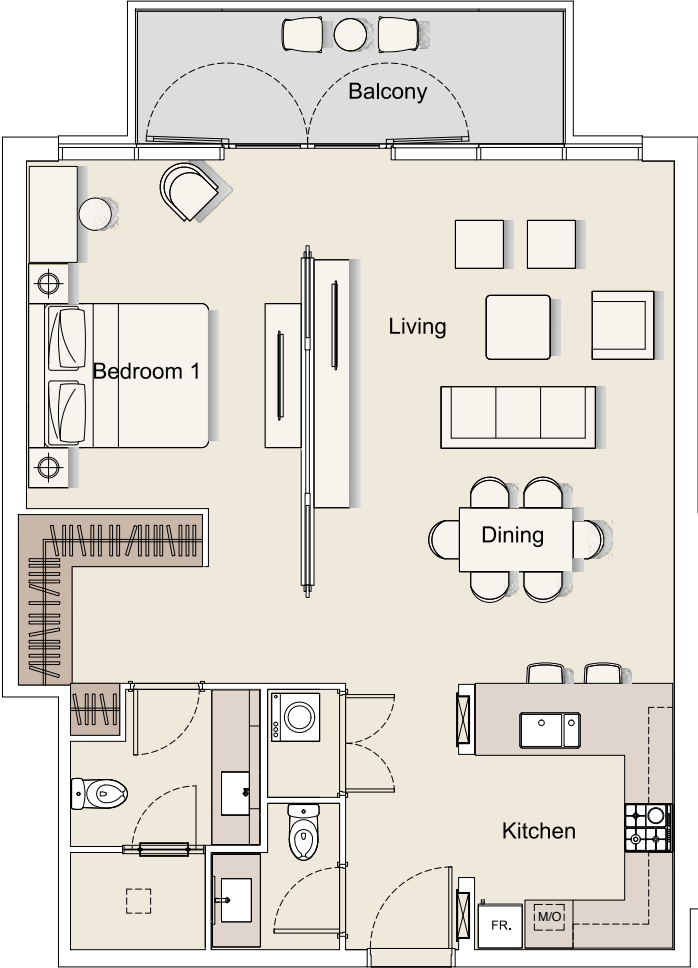
SITE PLAN



Internal Living	501.17 sq.ft.
Outdoor Living	34.77 sq.ft.
Total Living	535.94 sq.ft.

All drawings and dimensions are approximate. Drawings not to scale and are subject to change without notice. The developer reserves the right to make revisions. The units are measured at typical floor in the building and columns may vary in size depending on the floor level. The furnishings and accessories shown are for representation only. The length and width of the Unit and balcony varies depending on which floor and which orientation the unit is located within the building to comply with the building authority regulations.

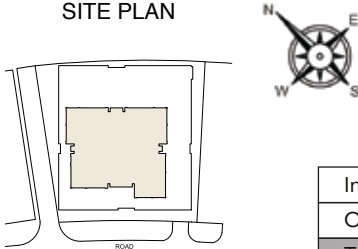
1 BR - TYPE 01



FLOOR PLAN



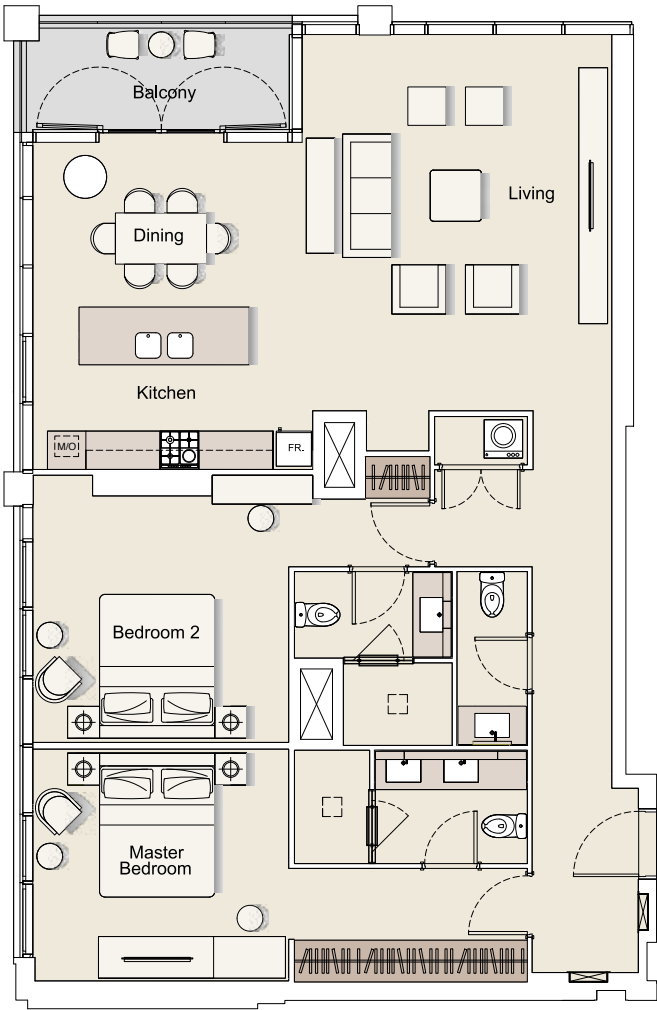
SITE PLAN



Internal Living	1,448.18 sq.ft.
Outdoor Living	76.42 sq.ft.
Total Living	1,524.60 sq.ft.

All drawings and dimensions are approximate. Drawings not to scale and are subject to change without notice. The developer reserves the right to make revisions. The units are measured at typical floor in the building and columns may vary in size depending on the floor level. The furnishings and accessories shown are for representation only. The length and width of the Unit and balcony varies depending on which floor and which orientation the unit is located within the building to comply with the building authority regulations.

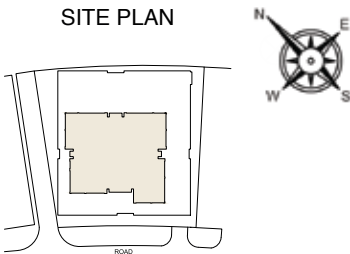
2 BR - TYPE 01



FLOOR PLAN



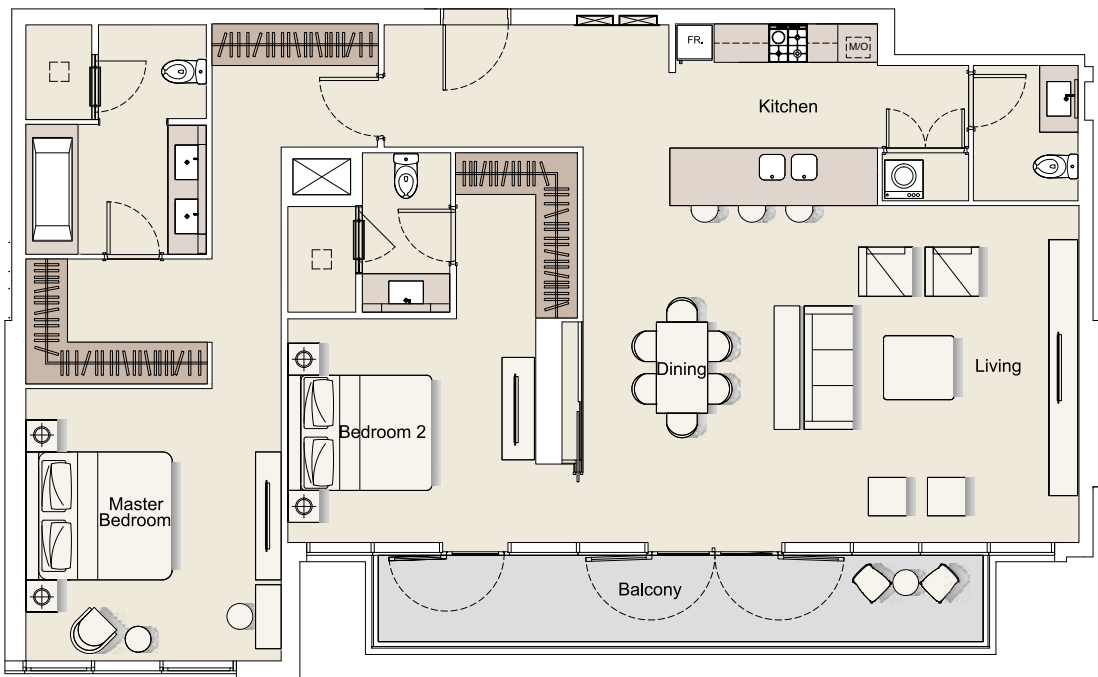
SITE PLAN



Internal Living	1,448.18 sq.ft.
Outdoor Living	76.42 sq.ft.
Total Living	1,524.60 sq.ft.

All drawings and dimensions are approximate. Drawings not to scale and are subject to change without notice. The developer reserves the right to make revisions. The units are measured at typical floor in the building and columns may vary in size depending on the floor level. The furnishings and accessories shown are for representation only. The length and width of the Unit and balcony varies depending on which floor and which orientation the unit is located within the building to comply with the building authority regulations.

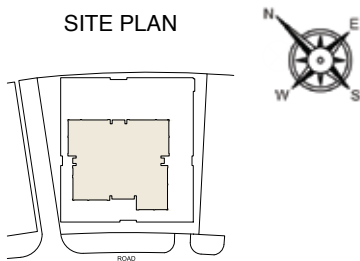
2 BR - TYPE 02



FLOOR PLAN



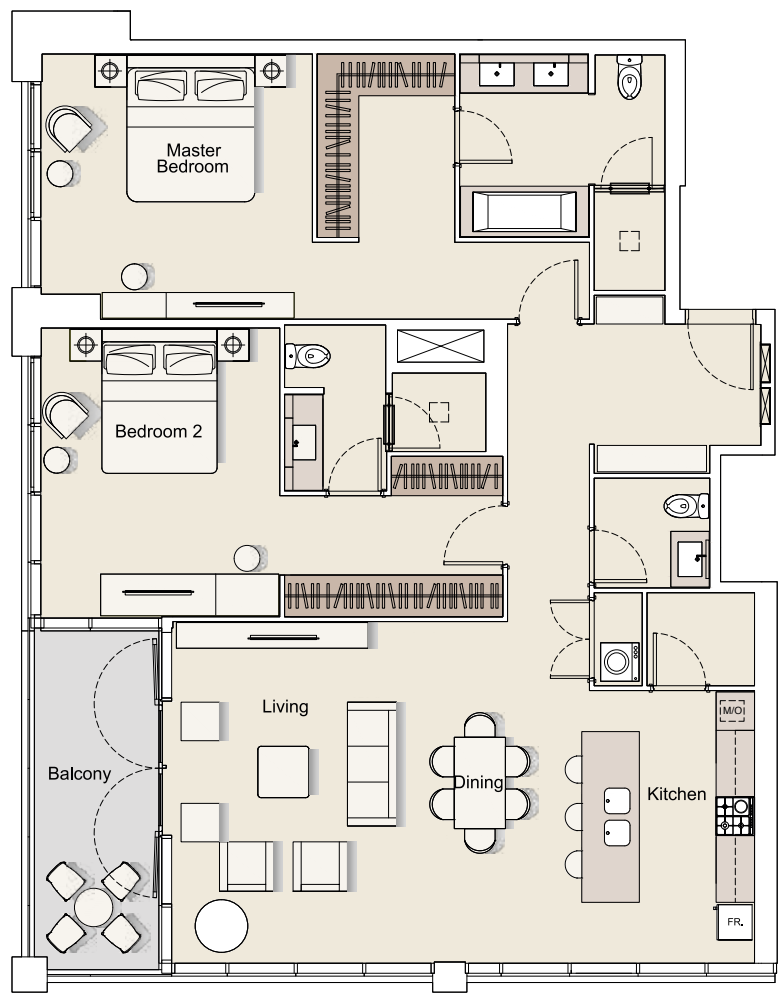
SITE PLAN



Internal Living	1,569.38 sq.ft.
Outdoor Living	151.34 sq.ft.
Total Living	1,720.72 sq.ft.

All drawings and dimensions are approximate. Drawings not to scale and are subject to change without notice. The developer reserves the right to make revisions. The units are measured at typical floor in the building and columns may vary in size depending on the floor level. The furnishings and accessories shown are for representation only. The length and width of the Unit and balcony varies depending on which floor and which orientation the unit is located within the building to comply with the building authority regulations.

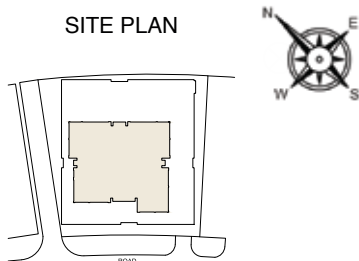
2 BR - TYPE 03



FLOOR PLAN



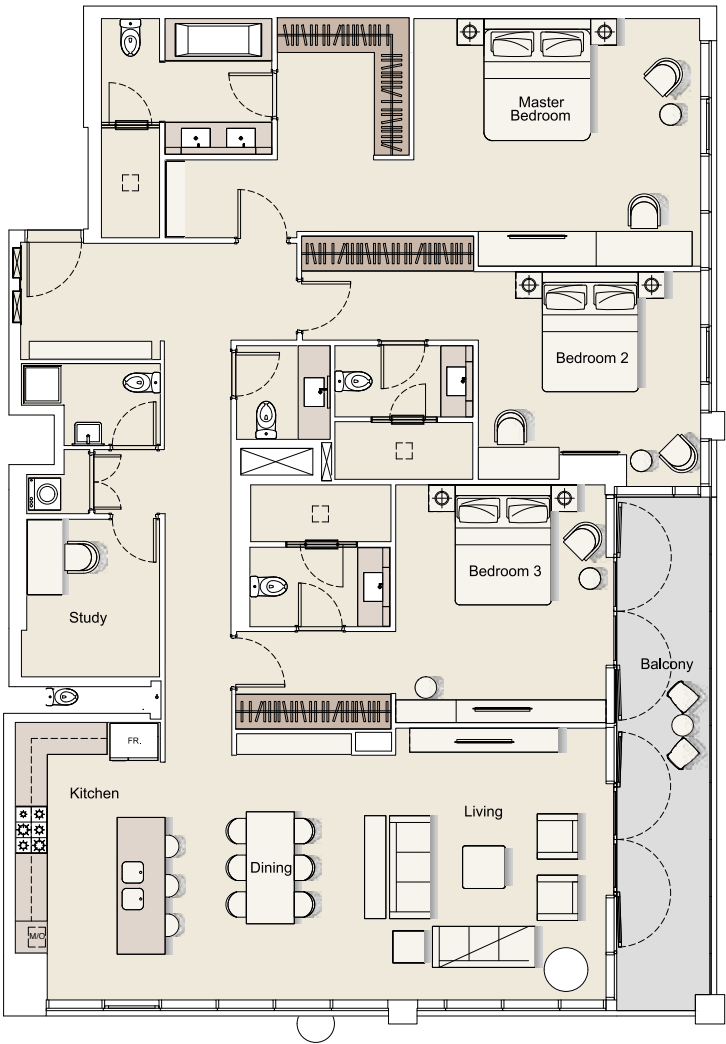
SITE PLAN



Internal Living	1580.25	sq.ft.
Outdoor Living	118.62	sq.ft.
Total Living	1698.87	sq.ft.

All drawings and dimensions are approximate. Drawings not to scale and are subject to change without notice. The developer reserves the right to make revisions. The units are measured at typical floor in the building and columns may vary in size depending on the floor level. The furnishings and accessories shown are for representation only. The length and width of the Unit and balcony varies depending on which floor and which orientation the unit is located within the building to comply with the building authority regulations.

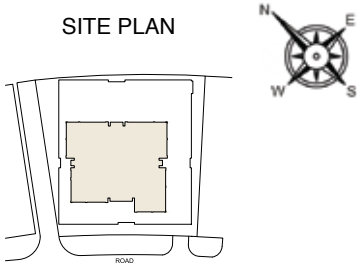
3 BR - TYPE 02



FLOOR PLAN



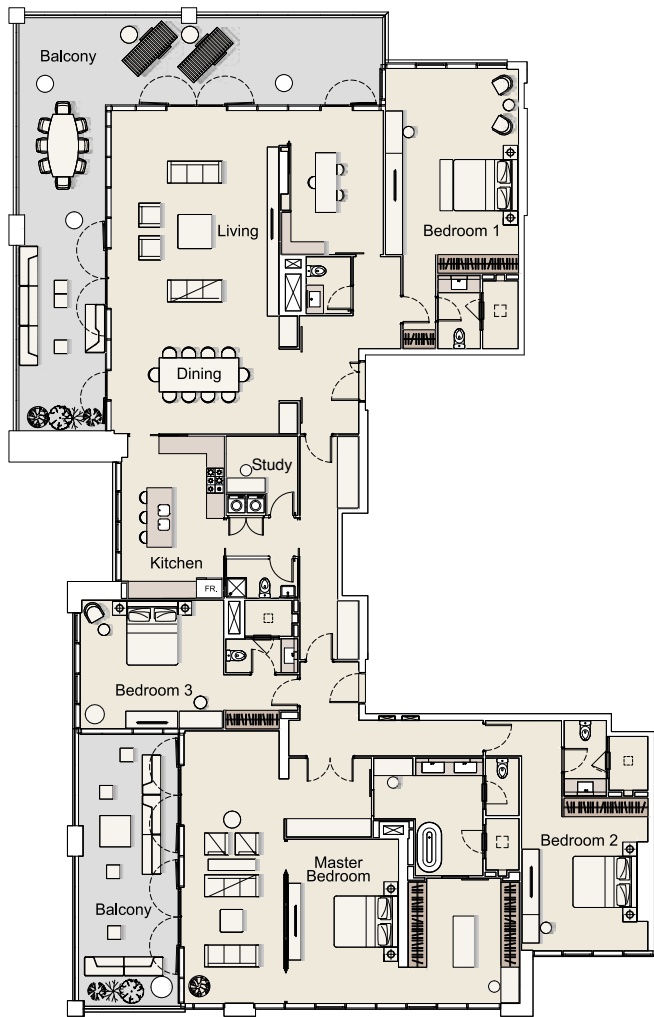
SITE PLAN



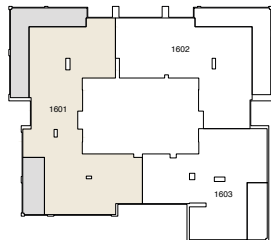
Internal Living	2,345.78 sq.ft.
Outdoor Living	184.60 sq.ft.
Total Living	2,530.38 sq.ft.

All drawings and dimensions are approximate. Drawings not to scale and are subject to change without notice. The developer reserves the right to make revisions. The units are measured at typical floor in the building and columns may vary in size depending on the floor level. The furnishings and accessories shown are for representation only. The length and width of the Unit and balcony varies depending on which floor and which orientation the unit is located within the building to comply with the building authority regulations.

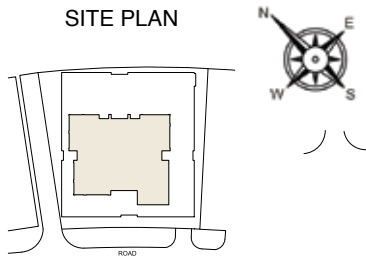
PENTHOUSE - TYPE 01



FLOOR PLAN



SITE PLAN



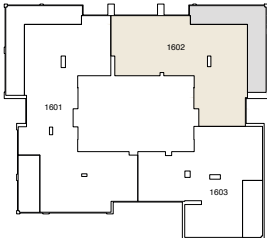
Internal Living	4,416.22 sq.ft.
Outdoor Living	1,226.66 sq.ft.
Total Living	5,642.87 sq.ft.

All drawings and dimensions are approximate. Drawings not to scale and are subject to change without notice. The developer reserves the right to make revisions. The units are measured at typical floor in the building and columns may vary in size depending on the floor level. The furnishings and accessories shown are for representation only. The length and width of the Unit and balcony varies depending on which floor and which orientation the unit is located within the building to comply with the building authority regulations.

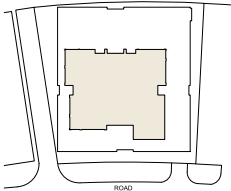
PENTHOUSE - TYPE 02



FLOOR PLAN



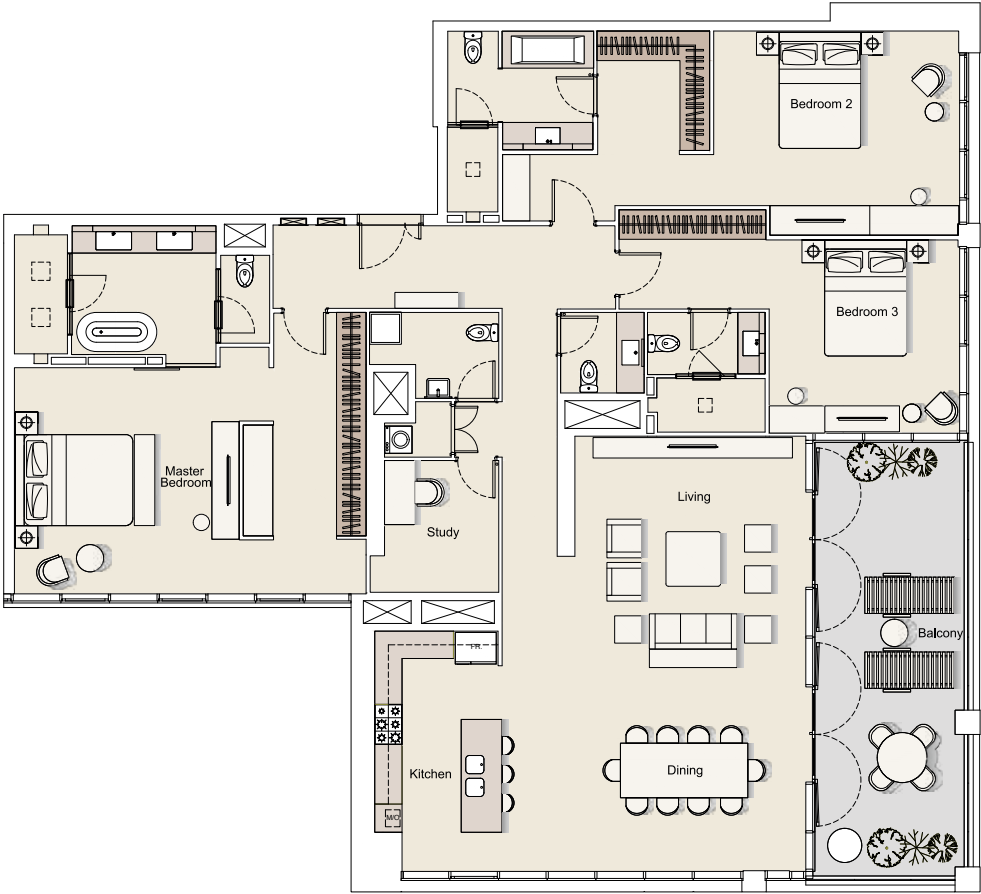
SITE PLAN



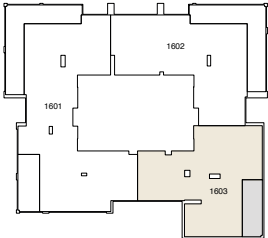
Internal Living	3,121.32 sq.ft.
Outdoor Living	829.25 sq.ft.
Total Living	3,950.57 sq.ft.

All drawings and dimensions are approximate. Drawings not to scale and are subject to change without notice. The developer reserves the right to make revisions. The units are measured at typical floor in the building and columns may vary in size depending on the floor level. The furnishings and accessories shown are for representation only. The length and width of the Unit and balcony varies depending on which floor and which orientation the unit is located within the building to comply with the building authority regulations.

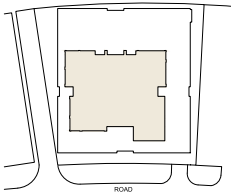
PENTHOUSE - TYPE 03



FLOOR PLAN



SITE PLAN



Internal Living	2,899.47 sq.ft.
Outdoor Living	351.12 sq.ft.
Total Living	3,250.59 sq.ft.

All drawings and dimensions are approximate. Drawings not to scale and are subject to change without notice. The developer reserves the right to make revisions. The units are measured at typical floor in the building and columns may vary in size depending on the floor level. The furnishings and accessories shown are for representation only. The length and width of the Unit and balcony varies depending on which floor and which orientation the unit is located within the building to comply with the building authority regulations.

PAYMENT PLAN

30%

Upon signature
of the reservation
agreement

10%

60 days after
the reservation

60%

On completion