



# Harrington HOUSE

Harrington  
HOUSE

Inspired by the Desert.  
Amplified by You.

Project Fact Sheet

# Location

- In the heart of new Dubai, Jumeirah Village Circle is a fast-paced and vibrant residential hub that brings together happy families and single professionals in a joyous centre of attraction.
- The development is home to a slew of multipurpose facilities, a selection of delectable restaurants and eateries, and a spectrum of retail and leisure destinations.
- The proximity to Dubai's gorgeous beaches, legendary shopping and nightlife destinations, and business and commercial facilities make it one of the most sought-after locations.



**10 Minutes**  
Dubai Marina



**10 Minutes**  
Mall of the Emirates



**10 Minutes**  
Downtown Dubai



**15 Minutes**  
Palm Jumeirah



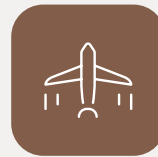
**15 Minutes**  
Burj Al Arab



**18 Minutes**  
The Walk - JBR



**25 Minutes**  
Dubai International  
Airport



**28 Minutes**  
Dubai World Central  
Airport





## Number of Units Per Type

**Studio:** = 10 units

**1 Bedroom:** = 53 units

**2 Bedroom:** = 29 units

## Size Range Per Unit Type

**Studio:** 382 sq.ft – 456 sq.ft

**1 Bedroom:** 484 sq.ft – 806 sq.ft

**2 Bedroom:** 993 sq.ft – 1940 sq.ft

## Starting Prices Per Type

**Studio:** AED 444,828 to 546,828

**1 Bedroom:** AED 480,828 to 775,828

**2 Bedroom:** AED 1,004,828 to 1,720,828



## Unit Features

Harrington House's design provide our residents with the utmost comfort and convenience. Elements such as high ceilings, sculpted balconies and fitted wardrobes are available in all of the apartments.

The kitchen is equipped with built-in appliances, a closed pantry, signature tip-out trays under the sink, a stacked microwave and oven. Black mosaic wall tiles and durable sintered stone countertops complete the picture.

The bathrooms come fully fitted with wall mosaics, signature chrome mixers and plenty of storage space.

## Amenities Within The Project

- Resort-style swimming pool
- Outdoor greenspace
- 2 story terraced courtyard with a dramatic wood feature staircase
- Outdoor BBQ/entertainment space
- Lively lobby & lounge with hotel style furnishings and concierge/security
- Art pieces throughout the property commissioned by Ellington Art Foundation
- Fitness studio with precision state of the art equipment and pool/courtyard view
- Spa inspired changing rooms with steam showers
- Indoor and outdoor kids play areas with sustainable finishes and Montessori inspired features





















































# Floor Plans



# Studio - Type A

# Harrington HOUSE



Internal Living Area	398.05 sq.ft.
Outdoor Living Area	43.92 sq.ft.
<b>Total Living Area</b>	<b>441.97 sq.ft.</b>



**G Floor**



**1<sup>st</sup> Floor**



**2<sup>nd</sup> Floor**



**3<sup>rd</sup> Floor**

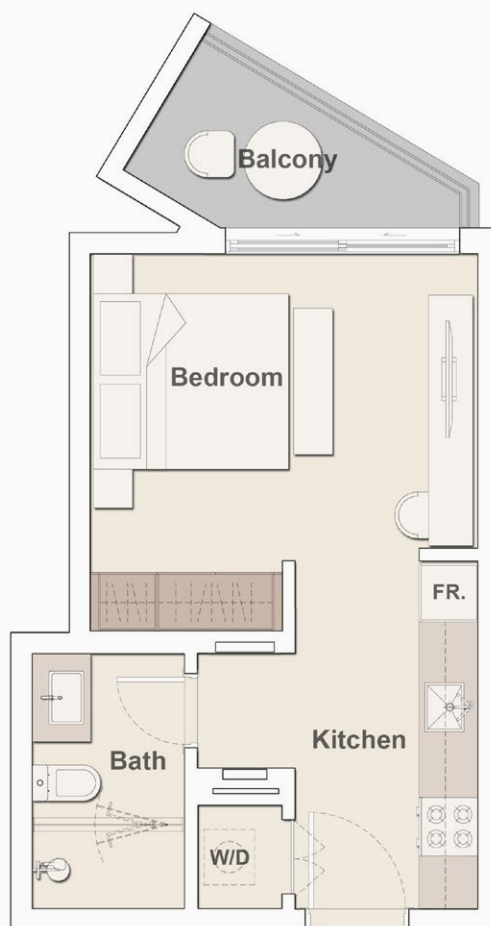


**4<sup>th</sup> Floor**



# Studio - Type B

# Harrington HOUSE



Internal Living Area	332.50 sq.ft.
Outdoor Living Area	49.30 sq.ft.
<b>Total Living Area</b>	<b>381.80 sq.ft.</b>



**G Floor**



**1<sup>st</sup> Floor**



**2<sup>nd</sup> Floor**



**3<sup>rd</sup> Floor**



**4<sup>th</sup> Floor**



# Studio - Type D

# Harrington HOUSE



Internal Living Area 412.69 sq.ft.

Outdoor Living Area 43.49 sq.ft.

**Total Living Area 456.17 sq.ft.**



**G Floor**



**1<sup>st</sup> Floor**



**2<sup>nd</sup> Floor**



**3<sup>rd</sup> Floor**



**4<sup>th</sup> Floor**



# 1 Bedroom - Type A

## Harrington HOUSE



Internal Living Area	673.60 sq.ft.
Outdoor Living Area	100.21 sq.ft.
<b>Total Living Area</b>	<b>773.82 sq.ft.</b>



**G Floor**



**1<sup>st</sup> Floor**



**2<sup>nd</sup> Floor**



**3<sup>rd</sup> Floor**

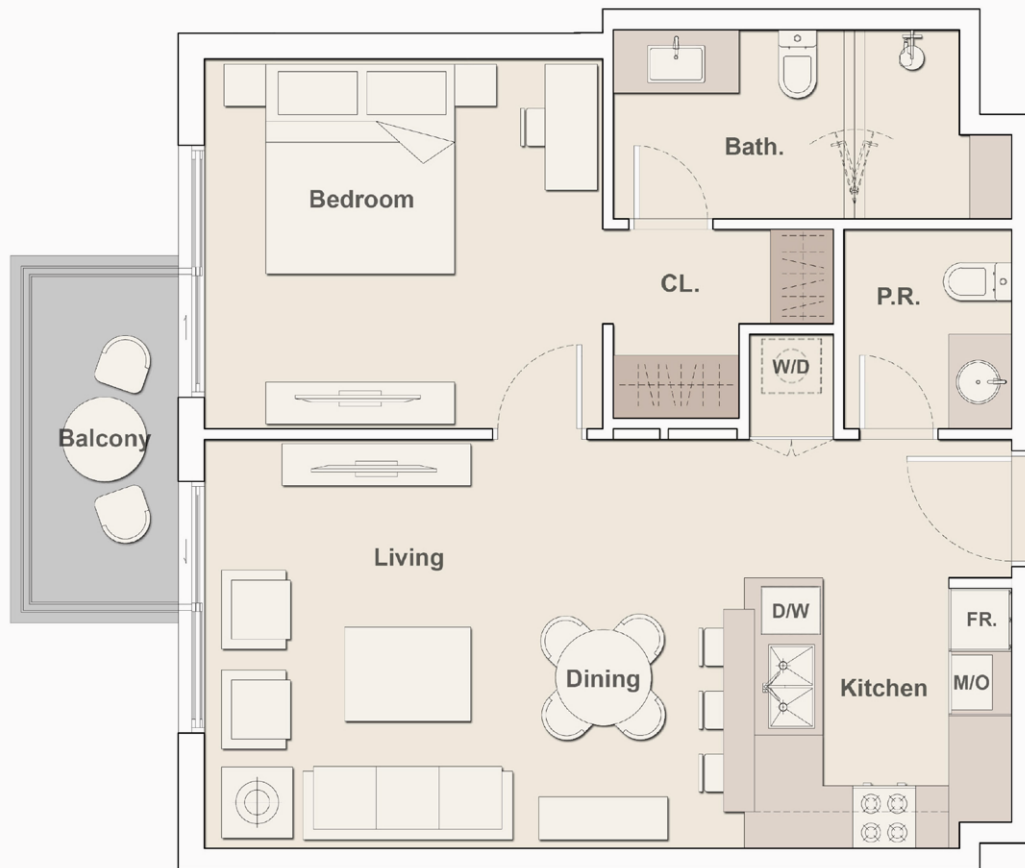


**4<sup>th</sup> Floor**



# 1 Bedroom - Type A2

## Harrington HOUSE



Internal Living Area	667.58 sq.ft.
Outdoor Living Area	55.86 sq.ft.
<b>Total Living Area</b>	<b>723.44 sq.ft.</b>



**G Floor**



**1<sup>st</sup> Floor**



**2<sup>nd</sup> Floor**



**3<sup>rd</sup> Floor**

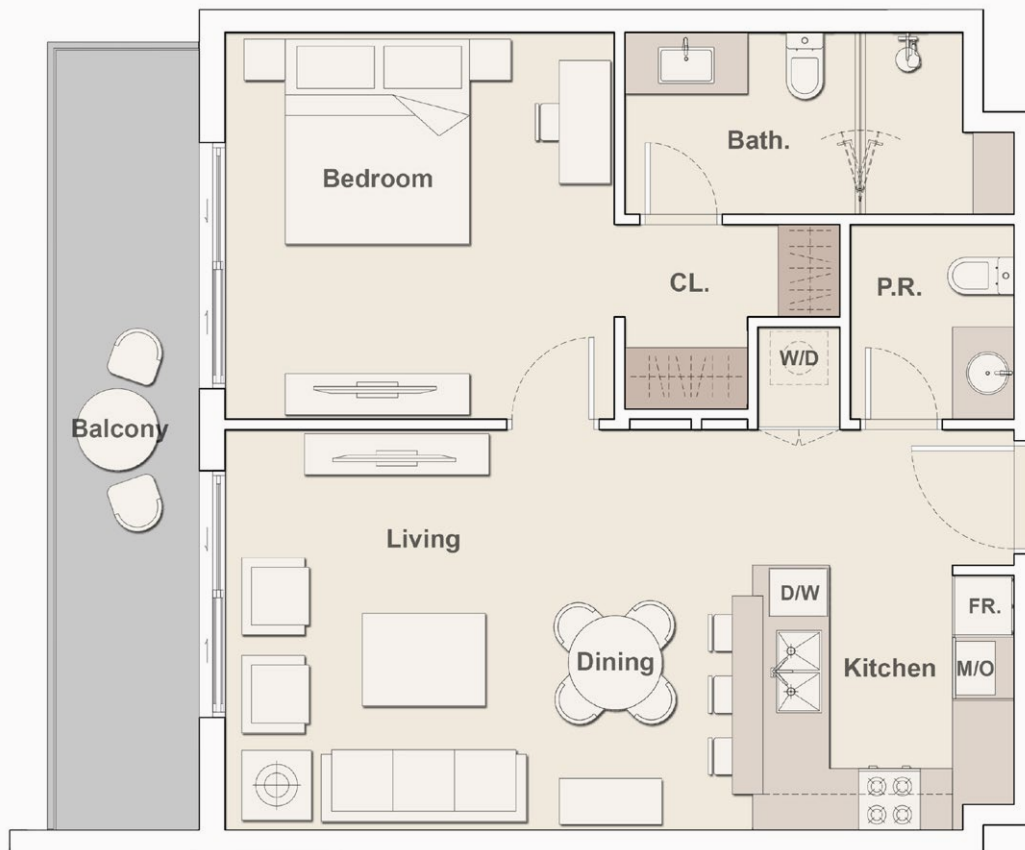


**4<sup>th</sup> Floor**



# 1 Bedroom - Type A<sub>3</sub>

## Harrington HOUSE



Internal Living Area	672.96 sq.ft.
Outdoor Living Area	133.58 sq.ft.
<b>Total Living Area</b>	<b>806.54 sq.ft.</b>



**G Floor**



**1<sup>st</sup> Floor**



**2<sup>nd</sup> Floor**



**3<sup>rd</sup> Floor**



**4<sup>th</sup> Floor**



# 1 Bedroom - Type B

# Harrington HOUSE



Internal Living Area	692.33 sq.ft.
Outdoor Living Area	98.81 sq.ft.
<b>Total Living Area</b>	<b>791.15 sq.ft.</b>



**G Floor**



**1<sup>st</sup> Floor**



**2<sup>nd</sup> Floor**



**3<sup>rd</sup> Floor**



**4<sup>th</sup> Floor**



# 1 Bedroom - Type C

## Harrington HOUSE



Internal Living Area 415.06 sq.ft.

Outdoor Living Area 68.46 sq.ft.

**Total Living Area 483.51 sq.ft.**



**G Floor**



**1<sup>st</sup> Floor**



**2<sup>nd</sup> Floor**



**3<sup>rd</sup> Floor**



**4<sup>th</sup> Floor**



# 1 Bedroom - Type C1

## Harrington HOUSE



Internal Living Area 414.63 sq.ft.

Outdoor Living Area 107.32 sq.ft.

**Total Living Area 521.94 sq.ft.**



**G Floor**



**1<sup>st</sup> Floor**



**2<sup>nd</sup> Floor**



**3<sup>rd</sup> Floor**

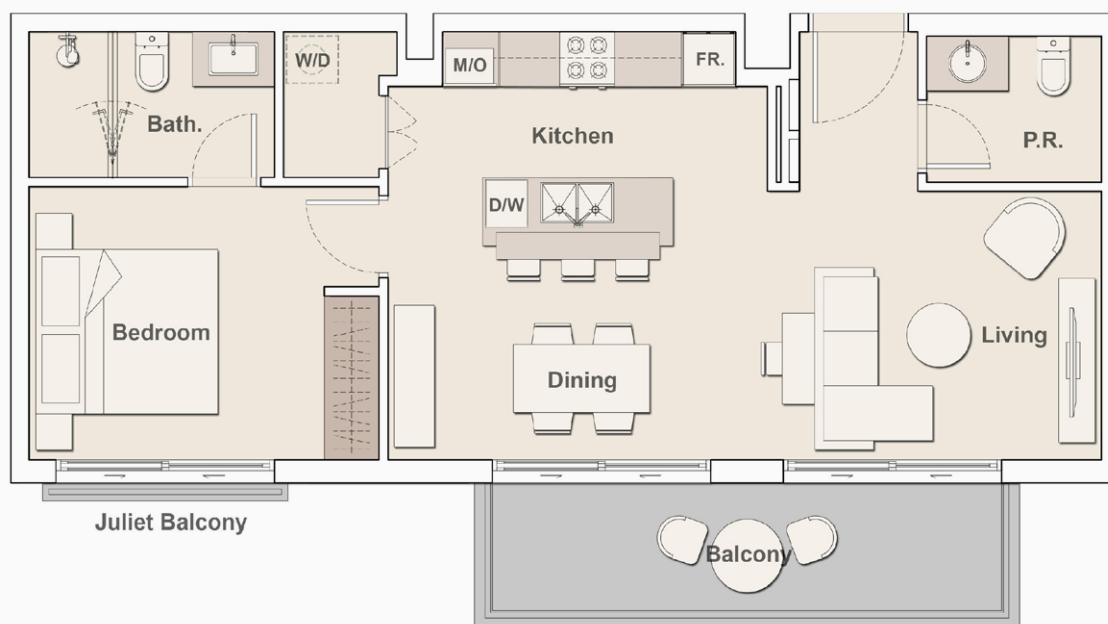


**4<sup>th</sup> Floor**



# 1 Bedroom - Type D

## Harrington HOUSE



Internal Living Area	625.71 sq.ft.
Outdoor Living Area	98.81 sq.ft.
<b>Total Living Area</b>	<b>724.52 sq.ft.</b>



**G Floor**



**1<sup>st</sup> Floor**



**2<sup>nd</sup> Floor**



**3<sup>rd</sup> Floor**

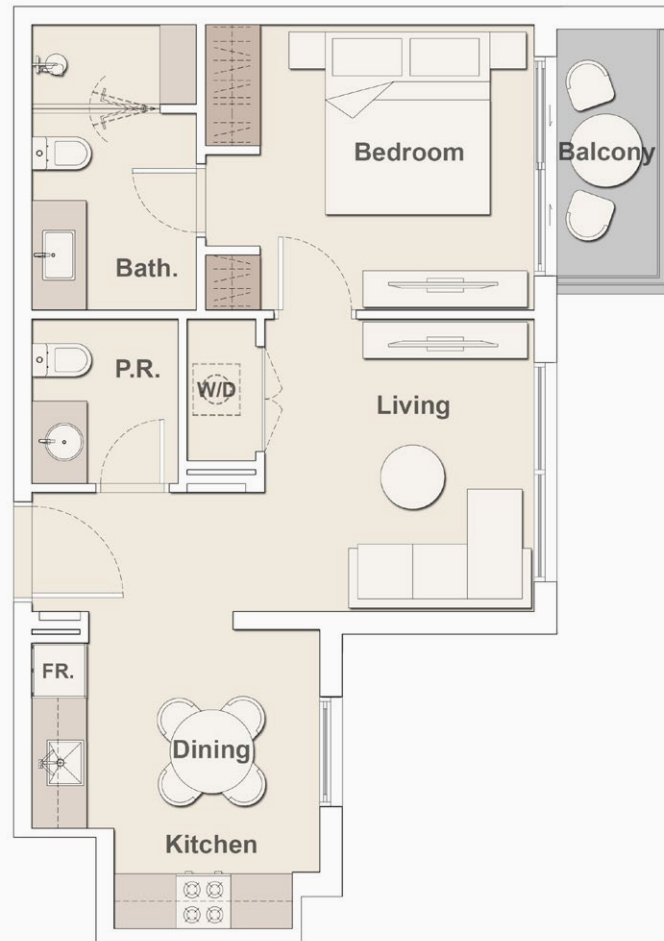


**4<sup>th</sup> Floor**



# 1 Bedroom - Type E

## Harrington HOUSE



Internal Living Area	518.07 sq.ft.
Outdoor Living Area	40.58 sq.ft.
<b>Total Living Area</b>	<b>558.65 sq.ft.</b>



**G Floor**



**1<sup>st</sup> Floor**



**2<sup>nd</sup> Floor**



**3<sup>rd</sup> Floor**



**4<sup>th</sup> Floor**



# 1 Bedroom - Type F

## Harrington HOUSE



Internal Living Area 596.10 sq.ft.

Outdoor Living Area 100.21 sq.ft.

**Total Living Area 696.32 sq.ft.**



**G Floor**



**1<sup>st</sup> Floor**



**2<sup>nd</sup> Floor**



**3<sup>rd</sup> Floor**

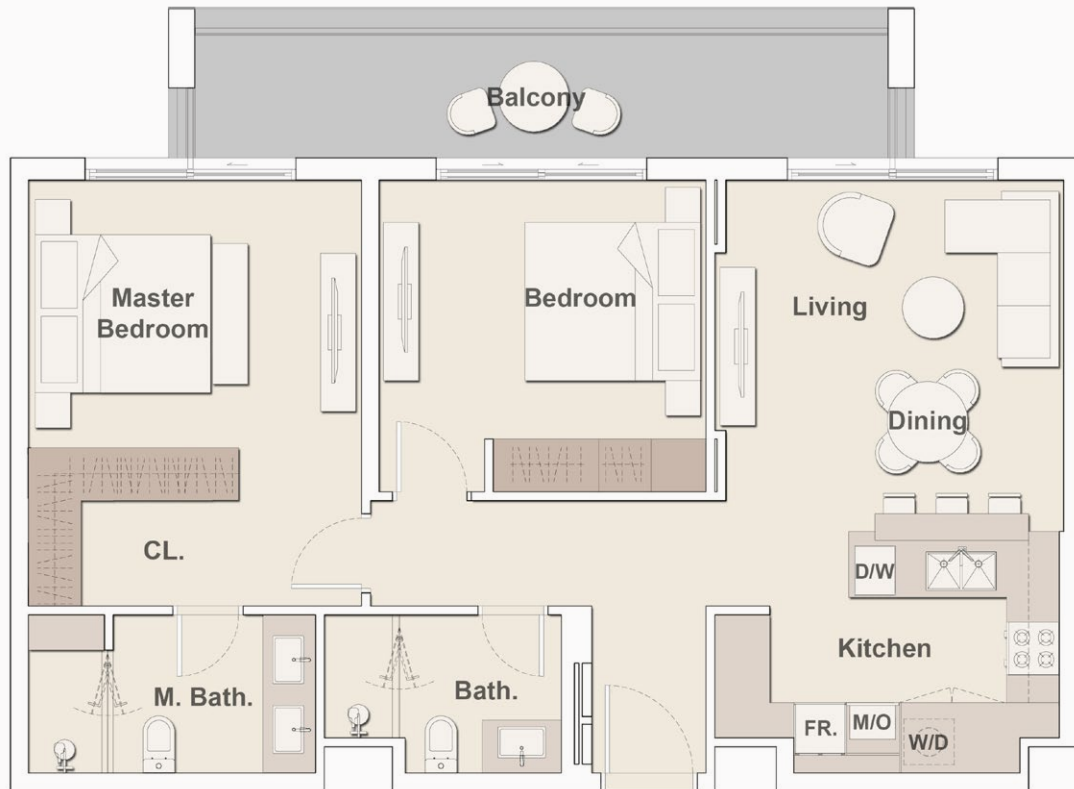


**4<sup>th</sup> Floor**



## 2 Bedroom - Type A

Harrington  
HOUSE



Internal Living Area	886.30 sq.ft.
Outdoor Living Area	139.72 sq.ft.
<b>Total Living Area</b>	<b>1026.01 sq.ft.</b>



**G Floor**



**1<sup>st</sup> Floor**



**2<sup>nd</sup> Floor**



**3<sup>rd</sup> Floor**



**4<sup>th</sup> Floor**



## 2 Bedroom - Type A1

## Harrington HOUSE



Internal Living Area	885.87 sq.ft.
Outdoor Living Area	112.27 sq.ft.
<b>Total Living Area</b>	<b>998.14 sq.ft.</b>



**G Floor**



**1<sup>st</sup> Floor**



**2<sup>nd</sup> Floor**



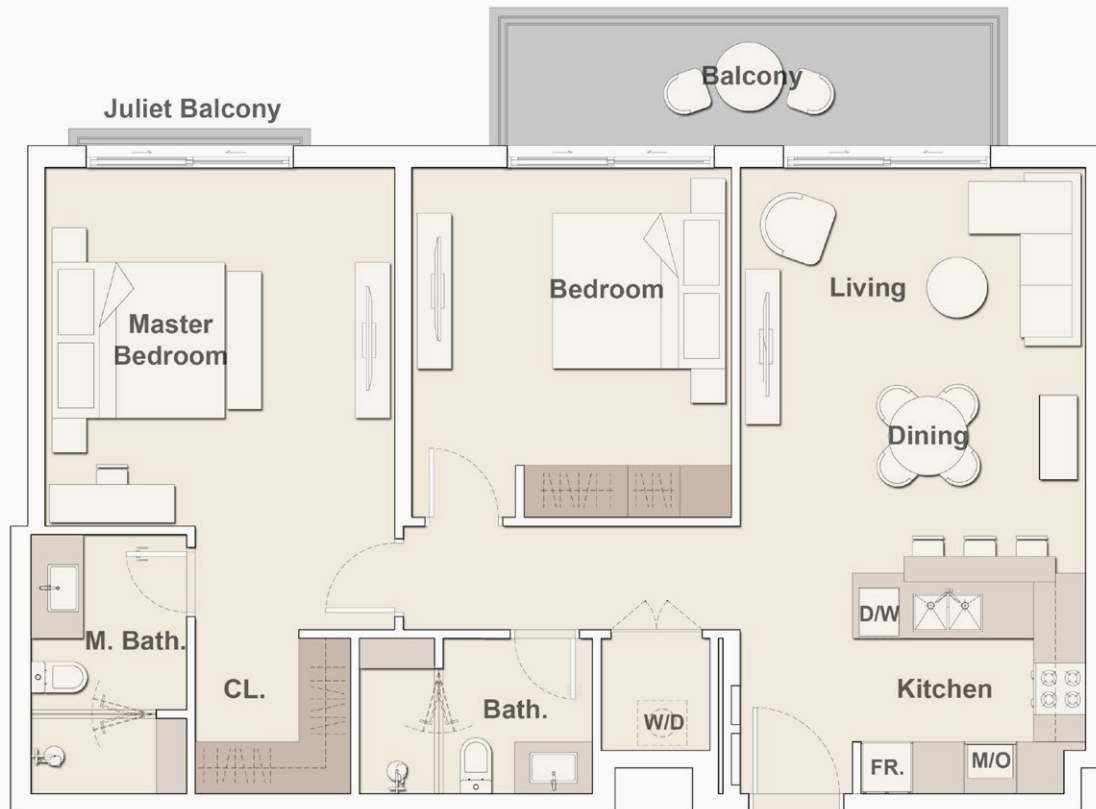
**3<sup>rd</sup> Floor**



**4<sup>th</sup> Floor**

## 2 Bedroom - Type B

## Harrington HOUSE



Internal Living Area	981.78 sq.ft.
Outdoor Living Area	98.81 sq.ft.
<b>Total Living Area</b>	<b>1080.59 sq.ft.</b>



**G Floor**



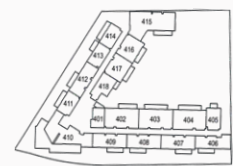
**1<sup>st</sup> Floor**



**2<sup>nd</sup> Floor**



**3<sup>rd</sup> Floor**



**4<sup>th</sup> Floor**



## 2 Bedroom - Type C

## Harrington HOUSE



Internal Living Area	866.06 sq.ft.
Outdoor Living Area	138.32 sq.ft.
<b>Total Living Area</b>	<b>1004.38 sq.ft.</b>



**G Floor**



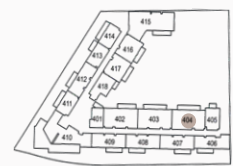
**1<sup>st</sup> Floor**



**2<sup>nd</sup> Floor**



**3<sup>rd</sup> Floor**



**4<sup>th</sup> Floor**

## 2 Bedroom - Type D

Harrington  
HOUSE



Internal Living Area	1003.52 sq.ft.
Outdoor Living Area	127.01 sq.ft.
<b>Total Living Area</b>	<b>1130.53 sq.ft.</b>



**G Floor**



**1<sup>st</sup> Floor**



**2<sup>nd</sup> Floor**



**3<sup>rd</sup> Floor**

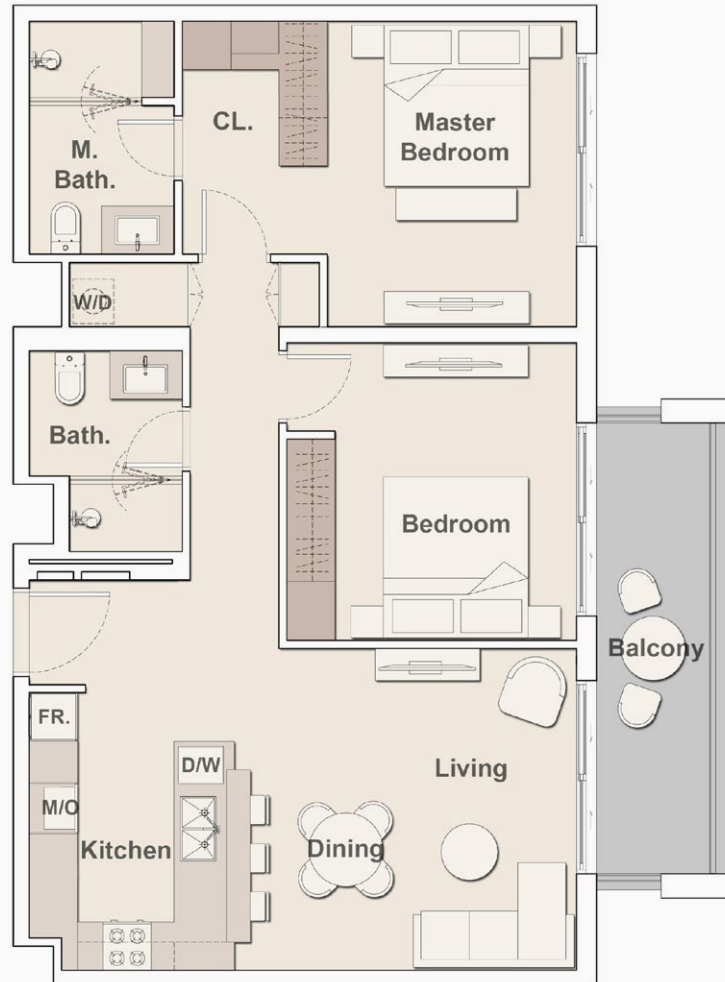


**4<sup>th</sup> Floor**



## 2 Bedroom - Type E

## Harrington HOUSE



Internal Living Area	893.08 sq.ft.
Outdoor Living Area	100.21 sq.ft.
<b>Total Living Area</b>	<b>993.29 sq.ft.</b>



**G Floor**



**1<sup>st</sup> Floor**



**2<sup>nd</sup> Floor**



**3<sup>rd</sup> Floor**



**4<sup>th</sup> Floor**

## 2 Bedroom - Type F

## Harrington HOUSE



Internal Living Area	1158.41 sq.ft.
Outdoor Living Area	186.86 sq.ft.
<b>Total Living Area</b>	<b>1354.27 sq.ft.</b>



**G Floor**



**1<sup>st</sup> Floor**



**2<sup>nd</sup> Floor**



**3<sup>rd</sup> Floor**



**4<sup>th</sup> Floor**



## 2 Bedroom - Type G

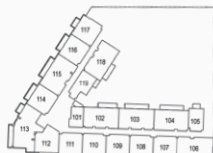
## Harrington HOUSE



Internal Living Area	1132.04 sq.ft.
Outdoor Living Area	808.80 sq.ft.
<b>Total Living Area</b>	<b>1940.84 sq.ft.</b>



**G Floor**



**1<sup>st</sup> Floor**



**2<sup>nd</sup> Floor**



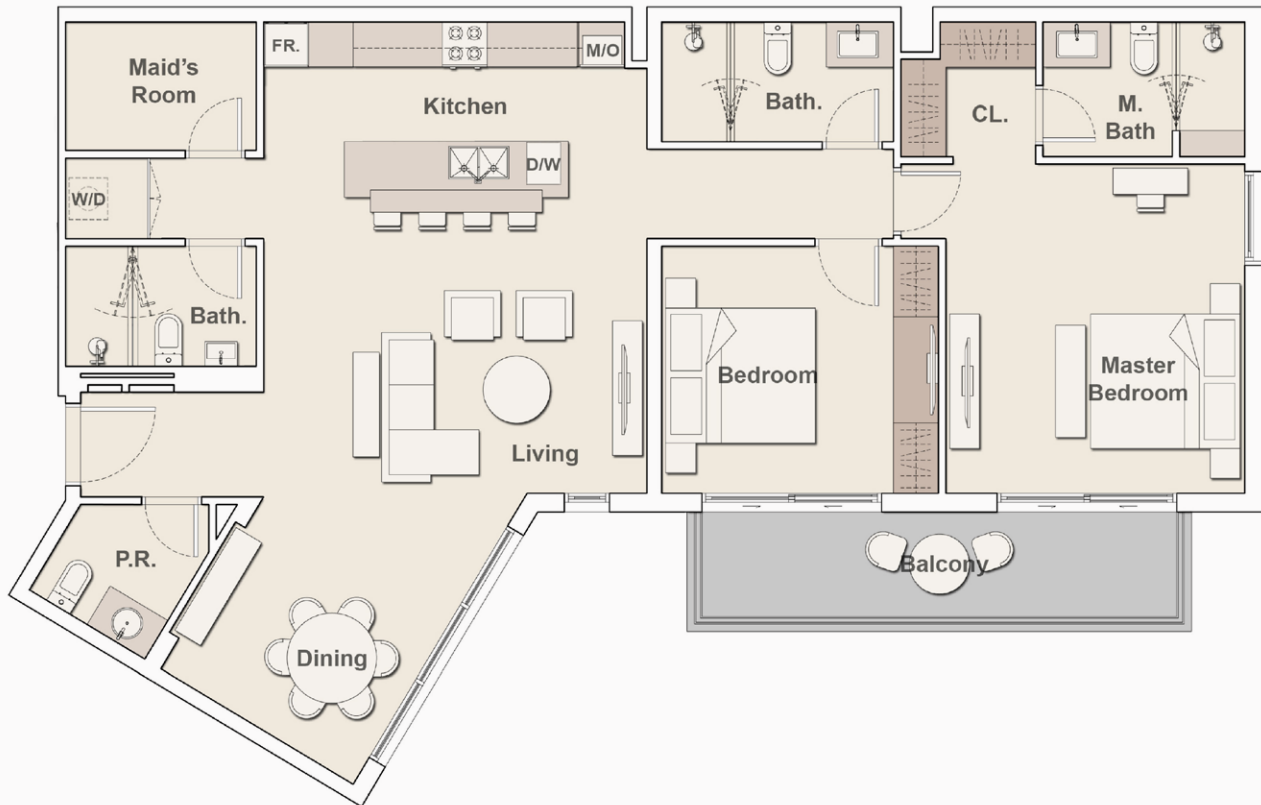
**3<sup>rd</sup> Floor**



**4<sup>th</sup> Floor**

## 2 Bedroom - Type H

## Harrington HOUSE



Internal Living Area	1285.75 sq.ft.
Outdoor Living Area	111.51 sq.ft.
<b>Total Living Area</b>	<b>1397.26 sq.ft.</b>



**G Floor**



**1<sup>st</sup> Floor**



**2<sup>nd</sup> Floor**



**3<sup>rd</sup> Floor**

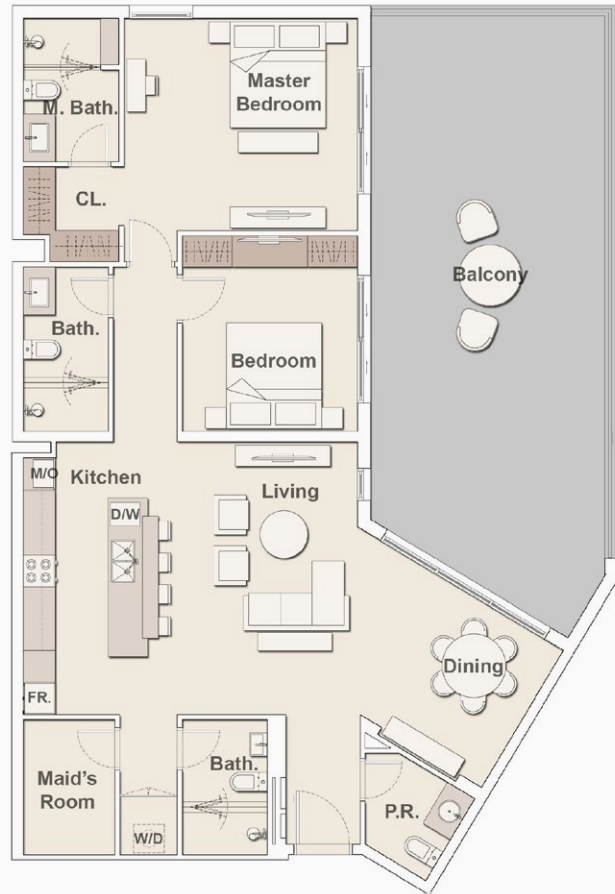


**4<sup>th</sup> Floor**



## 2 Bedroom - Type H1

## Harrington HOUSE



Internal Living Area	1282.73 sq.ft.
Outdoor Living Area	551.33 sq.ft.
<b>Total Living Area</b>	<b>1834.06 sq.ft.</b>



**G Floor**



**1<sup>st</sup> Floor**



**2<sup>nd</sup> Floor**



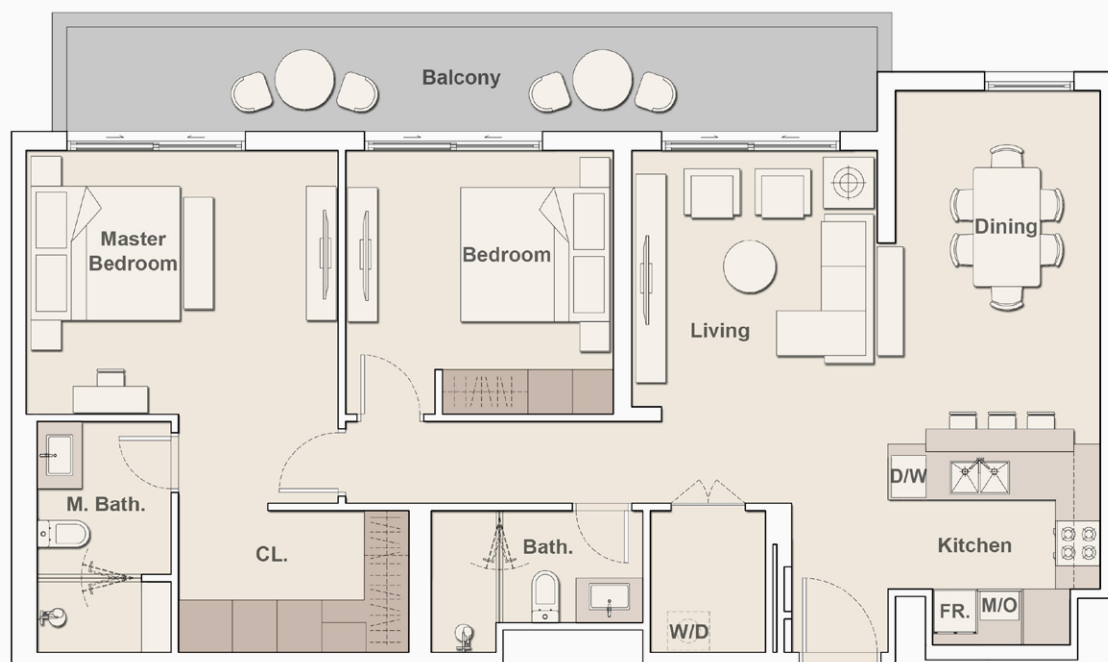
**3<sup>rd</sup> Floor**



**4<sup>th</sup> Floor**

## 2 Bedroom - Type I

## Harrington HOUSE



Internal Living Area	1098.13 sq.ft.
Outdoor Living Area	201.18 sq.ft.
<b>Total Living Area</b>	<b>1299.31 sq.ft.</b>



**G Floor**



**1<sup>st</sup> Floor**



**2<sup>nd</sup> Floor**



**3<sup>rd</sup> Floor**



**4<sup>th</sup> Floor**





LIVE IN *DESIGN*

**ELLINGTONPROPERTIES.AE**

Project Number: 2277

The renderings and visualizations contained in this brochure are provided for illustrative and marketing purposes. While the information provided is believed to be accurate and reliable at the time of printing, only the information contained in the final Sales and Purchase Agreement will have any legal effect.